

TD NexLabs®

Livextens Microbiology

Designed by microbiologists for microbiologists

TD NexLabs Microbiology LIS software is completely dedicated to microbiology. It offers workflows for bacteriology, mycology and parasitology thanks to customizable analytical protocols and flexible result entry methods

As the result of years of partnership with microbiologists worldwide, the solution is a modern, paper-free system that embodies the best in safety practices, and provides fast access to results within a flexible, fully auditable environment.



Paperless
microbiology



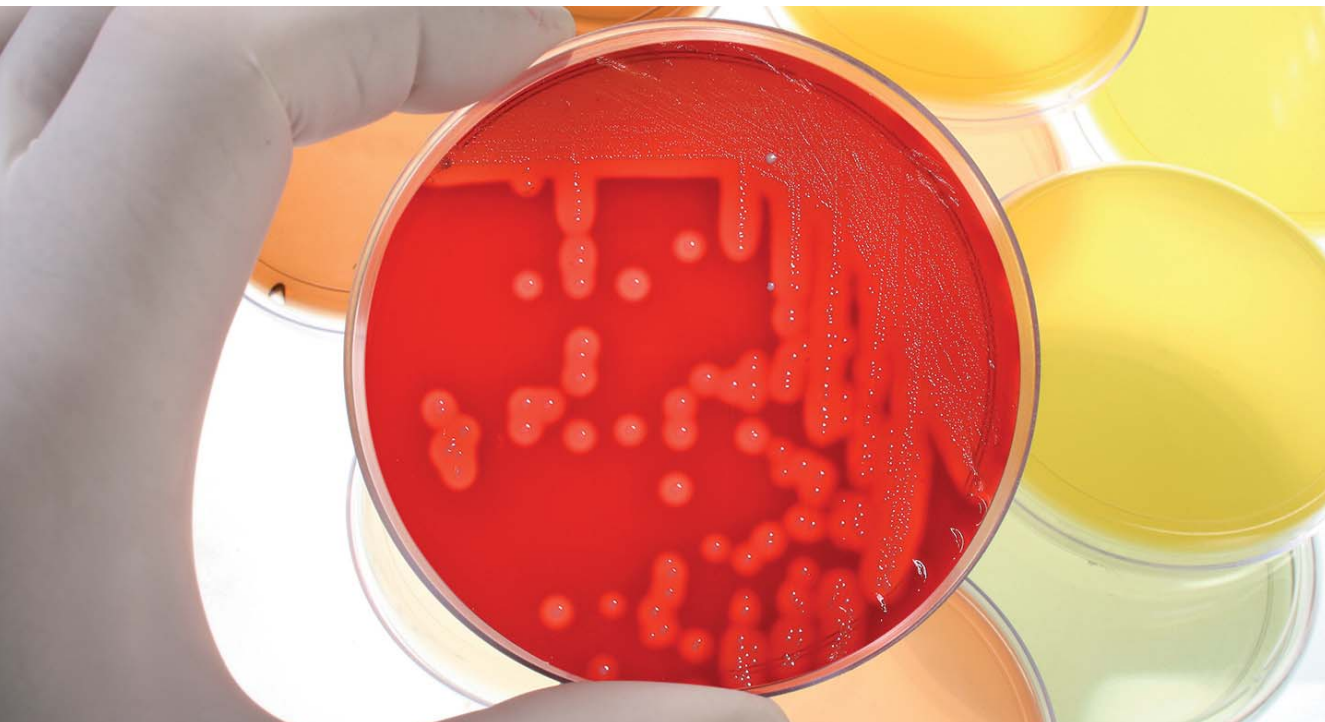
Epidemiology



Customization
& Flexibility

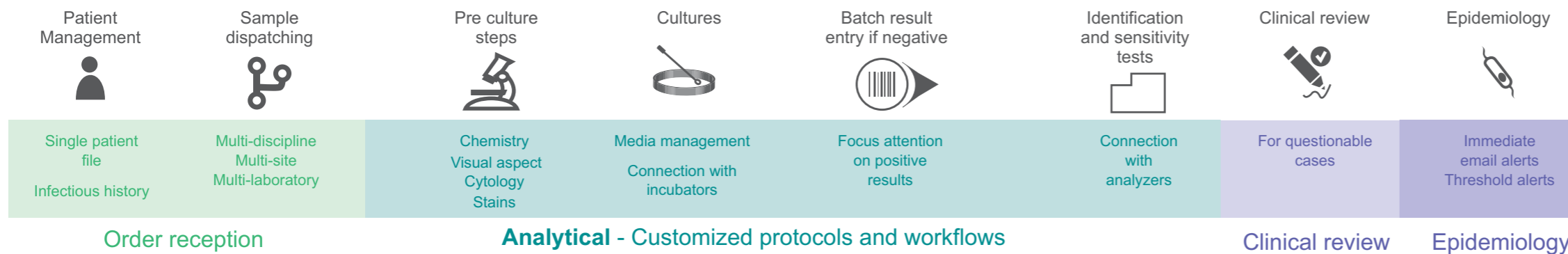


Quality &
Accreditation



TD NexLabs Microbiology is a modern, paper-free system that embodies the best in safety practices, and provides fast access to results within a flexible, fully auditable environment.

Microbiology requests are outside the typical workflow of specimens in the laboratory. Technicians need **specific microbiology workflows** that can adapt to their findings as the **examination progresses**. It's a **key element** of the TD NexLabs LIS solution.



Quality and accreditation

High quality with integrated tools

- Help to comply with standard requirements (ISO 15189, CAP 15189, GBEA, CLSI, EUCAST...)
 - ➔ Facilitates laboratory accreditation
- Powerful audit features at all stages: request, sample, patient
 - ➔ Enhanced traceability
- Non-conformity management
 - ➔ Improved quality of care
- Document management module
 - ➔ Compliant with ISO 15189 prerequisites

Testimonials

Annecy Hospital, FRANCE

“ The microbiology module introduced a real paperless bacteriology for a significant gain in efficiency.”

Dr Bland,
Biologist

Interoperability

A key factor for integration in healthcare organizations

A powerful communication engine

Use of standard communication protocols

- + For an easy interface with any Hospital Information Systems (HIS)
- + For immediate interface with identification and sensitivity analyzers, including mass spectrometry instruments

Robustness

Benefit from a reliable system

- + Ensure continuity of service
- + Save time during back-up
- + Guarantees response time
- + Ensure disaster recovery with limited data loss, thanks to regular snapshots
- + Reduce operating costs



Paperless microbiology

Increase productivity while retaining the possibility to use worksheets

- Efficiency
 - ➔ Save time with streamlined data entry and readability
 - ➔ Deliver reliable results in a minimum time
 - ➔ Real-time information access
- Customizable results entry screen
 - ➔ Relevant to the analytical process you are working on
 - ➔ Save time when entering the analysis results
- Patient Safety
 - ➔ Avoid mistakes by standardizing methods
 - ➔ High traceability
 - ➔ Safe validation
 - ➔ Email alerts to improve reactivity
 - ➔ Epidemiology at a glance



Epidemiology

Leverage Microbiology data

- Epidemiology alerts
 - ➔ Immediate alerts for specific single results based on user-defined rules
 - ➔ Threshold alerts when a particular event has reached a user-defined threshold
- Efficient epidemiology reporting
 - ➔ Incidence reports
 - ➔ Resistance reports
 - ➔ Management of duplicates
- Ensure compatibility with local or worldwide disease surveillance systems
 - ➔ Microbiology data export for CoSURV, WHONET, EARSS
- Dynamic link with the patient data
 - ➔ Access to the detailed patient data from epidemiology views
 - ➔ Access to the Analytical workflow from epidemiology views



Highly customizable

Configurable to your own methods, organization and traceability rules

- Customize protocols and workflow
 - ➔ Guide the laboratory staff in handling specimens, results entry
- Define expert rules on-the-fly
 - ➔ Manage exceptions and alerts
 - ➔ Customize expert rules easily
 - ➔ Reduce the laboratory turnaround time
 - ➔ Reduce costs and rationalize work
- Choose how to enter results (worksheets, online, connected analyzers)
 - ➔ Match laboratory organization and workflows
- Easy system installation
 - ➔ Save installation time, reduce costs
- Real-time supervision of infrastructure, application and communication
 - ➔ Facilitate maintenance and optimize LIS availability and performance

TD NexLabs[®]

Livextens Microbiology

Designed by microbiologists for microbiologists



LEARN MORE

This is a succinct overview of the main product features, please contact us if you require further details.

Features

Order entry

- Customizable protocol/process definitions
- Comprehensive traceability and actions
- Online HIS/integrated instrument connections
- Multiple specimen management
- Patient infection history
- Multidisciplinary order entry
- Real-time rule-based system for order entry, allowing users to customize the standard protocols

Result entry

- Customized work lists
- Partial printing of results
- Labels for stains and agars/cultures
- Dedicated result entry screens
- Real-time information access
- Instrument connections, including interface with mass spectrometry instruments
- Result entry request-by-request (fully paperless)
- Batch result entry (e.g. negative results)
- Result entry via worksheets
- Real-time rule-based system allowing cascading test and result interpretation
- Delta check on antibiotics results

Clinical review

- Dedicated online or hard copy review
- Review lists
- Access to patient files
- Sensitivity test history
- Access to technicians' result entry screens (bench traceability)
- Culture summary
- Request status indicators
- Nosocomial indicators and warnings

Epidemiology

- Customizable immediate email alerts
- Real-time epidemiology threshold alerts
- Multicriteria data extraction for epidemiology and activity analysis
- Analysis including handling of duplicates
- Data export to Microsoft Excel
- Embedded graphical representation and reports

Companion solutions

- Document management module
- Non-conformity management module
- TDWeb, Web request & results management
- TDPatient, Web results server for patient
- TDBioBank, Added value and traceability for your biological specimens
- TDAalytics, Advanced statistics management

Technical overview

- Client computers running on the Windows operating system, standard (HL7) or customized protocols for medical data to interface with any HIS
- Support for virtual machine configurations (VMware)
- Real-time backup by snapshots



Corporate Headquarters
387, avenue Jean Kuntzmann
38330 Montbonnot - France
Tel. + 33 (0) 4 76 04 13 00
contact@technidata-web.com

Americas
Regional Headquarters
Montreal, CAN

Asia-Pacific
Regional Headquarters
Makati City, PHL

Benelux
Canada
France
Germany
United Kingdom
USA

www.technidata-web.com